

Cheshire West & Chester Council

# Museums, Exhibitions & Events

October 2018 - January 2019



GROSVENOR  
MUSEUM



Chester  
HISTORY  
& HERITAGE



Stretton  
WATERMILL



WEAVER HALL  
Museum & Workhouse



LION  
SALT  
WORKS



**WEST CHESHIRE  
MUSEUMS**



Cheshire West  
and Chester

# Grosvenor Museum, Chester

27 Grosvenor Street, Chester, CH1 2DD

Located in England's most picturesque city, the Grosvenor Museum's nationally important collections celebrate Chester's cultural heritage. The Roman galleries explore life in the Roman fortress of Deva and display the largest group of inscribed and sculpted Roman stones from a single site in Britain. The paintings and sculpture in the Art Gallery span half a millennium of art in Cheshire, while the Silver Gallery presents the definitive collection of Chester silver. Nine period rooms illustrate changing fashions in domestic interiors from the 17th century to the 1920s. Further galleries explore the area's natural history and display highlights of the costume collection.

## Admission free, suggested donation £3

Monday – Saturday 10.30am-5pm, Sunday 1-4pm. Closed 24-28 December & 1 January.



Telephone 01244 972197

Find us on Facebook: Grosvenor Museum and Stretton Watermill

Follow us on Twitter @cwacmuseums

Website: [www.westcheshiremuseums.co.uk](http://www.westcheshiremuseums.co.uk)



## Support us

The Grosvenor Museum Society provides vital support for the museum. Members of the society enjoy a full and varied programme of events, including lectures and outings. See [www.grosvenor-museum-society.co.uk](http://www.grosvenor-museum-society.co.uk).

## Volunteers

Please see all West Cheshire Museums volunteering roles on the website [www.westcheshiremuseums.co.uk](http://www.westcheshiremuseums.co.uk)

## Disabled access

Wheelchair access to the ground floor, including Exhibition Gallery One, Lecture Theatre and accessible toilet. No lift to Art Gallery, Costume Gallery or Exhibition Gallery Two on first floor.

# Exhibitions

Grosvenor Museum, Chester

**Until 7 October**

## Michael Sandle: Monumental Rage

Exhibition Galleries One & Two,  
Art Gallery

(Art Gallery closed 24 September)

Professor Michael Sandle RA, who studied at Chester School of Art, is widely recognised as one of the finest sculptors in the world and is also a brilliant draughtsman and printmaker. Appropriately for the year in which we commemorate the centenary of the end of the Great War, his powerful work explores the themes of violence, war, death and memorialisation. In direct response to the horrors of our age, his work presents a passionate critique of the abuse of power in global conflict, politics and culture, and the accompanying cynicism and hypocrisy.



#GMMonumental

FLOWERS



The Finnis Scott  
Foundation

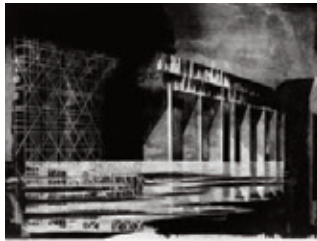
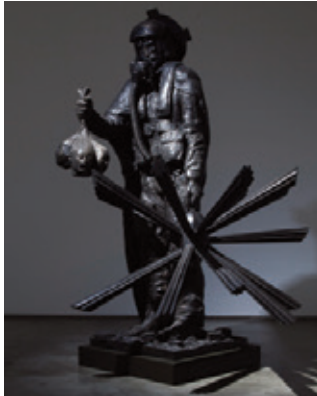


WESTMINSTER  
FOUNDATION

RA250 Royal Academy of Arts  
with Art Fund



HISCOX



**Until 18 November**

## Remarkable Women

Coin Gallery

An exhibition celebrating some very notable women of Chester – some good, some not so, but all remarkable.



**Until July 2019**

## Unexpected Elegance: Female Fashion from the 1970s

Costume  
Gallery

The 1970s are often called 'the decade that taste forgot', but the dresses in this small exhibition show that this was far from true. From minis to midis and maxis, in fabrics ranging from cotton and corduroy to polyester and fake leopard-skin, with designs by Ossie Clark, Givenchy and Zandra Rhodes, we celebrate some of the more subtle pleasures of 1970s fashion.





# Exhibitions

Grosvenor Museum, Chester

**17 October – 24 February**

## **Memento Mori: Tombs and Memorials in Cheshire**

**Exhibition Gallery Two**

As we remember the centenary of the end of the Great War, this exhibition presents watercolours, drawings, prints, photographs and sculpture showing how Cheshire has commemorated its dead from the Romans to the present day. With tombstones, tomb-chests and mural slabs, public sculptures, cenotaphs and a shrine, the imagery of commemoration ranges across the centuries with knights and their ladies, parents and their children, skeletons and skulls, heraldry, saints and angels.

*Supported by the Megan Gwynne-Jones Charitable Trust, Grosvenor Museum Society, Chester Archaeological Society*



**27 October – 22 April**

## **Dead Normal: Death in Everyday Life**

**Exhibition Gallery One**



Death is a universal occurrence – people have always died, and still do. The ways we have thought about and interacted with death depend on many factors and have changed over time. This exhibition explores the ways different cultures and communities have tried to make sense of the end of life, mourned their loved ones, and chosen to remember them.

**24 November – 27 January**

## **Winter Watch**

**Coin Gallery**

The Midsummer and Winter Watch parades are a unique part of Chester's history, still enjoyed by hundreds of people each year. This exhibition explores the work which goes into staging them and gives a glimpse behind the scenes of these iconic events.



**1 December – 6 January**

## **Castle Street at Christmas**

**Period House**

Take a break from the hustle and bustle of Christmas shopping and step back in time to the Christmas of yesteryear. Come and see our period rooms decked out in festive finery, and discover how the people of Chester have celebrated Christmas over the last 350 years.



Children's activities are aimed at 4 to 12 years unless otherwise stated. Children must be accompanied by an adult. Please contact the Museum Shop 01244 972112 for group bookings.

West Cheshire Museums Exhibitions and Events 05

# Family Events

Grosvenor Museum, Chester

## Fridays 5 October, 2 November, 7 December, 4 January, 1 February Grosvenor Museum 'Quiet' Afternoons

3-4.30pm, drop-in.  
Free, suggested donation £1.50.  
Aimed at those who enjoy a 'quieter' visit to the museum, including people living with autism and their families and carers. Wherever possible, we dim the lights and turn the recorded sounds down. Our 'quiet' afternoons are themed, with hands-on activities to engage all ages and abilities. Pre-visit orientation pack available on request from Virginia Kettle on 01244 972120 or virginia.kettle@cheshirewestandchester.gov.uk.

## Mondays 8 October, 12 November, 10 December, 14 January Museum Explorers

Natural Cheshire Gallery  
Arrive 9.50am for 10-11am.  
Free, suggested donation £1.50.

Especially for ages 2-4, although younger siblings are also welcome. Come and explore nature's changing seasons and discover lots of exciting things from the past through play, crafts, stories and songs.



## Saturday 27 & Monday 29 October, Friday 2 November Family film screening of 'Coco'

Lecture Theatre  
11am-12.50pm. Free, but booking essential through [www.experiencechester.co.uk](http://www.experiencechester.co.uk).  
This beautifully animated film is simultaneously life-affirming and death-obsessed. Young Miguel dreams of becoming a musician and finds himself in the stunning and colourful Land of the Dead. He makes a new friend and together they embark on an extraordinary journey to unlock the real story behind Miguel's family history.  
*Brought to you by CH1 ChesterBID*



## Monday 29 October Dancing Skeletons

Newstead Gallery  
12.30-2.30pm. Free, suggested donation £1.50.  
Make a jointed cardboard skeleton with a bright headdress and skirt and dance your way to Halloween! There is a free film showing of the Disney/Pixar film *Coco* in the Lecture Theatre beforehand.

## Wednesday 31 October Halloween Crafts

Newstead Gallery  
2-4pm drop-in.  
Free, suggested donation £1.50.  
Join us and make a wizard's or witch's hat or a black cat mask to complete your trick or treat costume. Boo!



## Thursday 1 November Celtic Lanterns

Newstead Gallery  
2-4pm, drop-in.  
Free, suggested donation £1.50.  
The Celtic festival of Samhain was held on 1 November, celebrating the end of the harvest and the coming of winter. As the long nights draw in, join us in marking the occasion by making a Celtic-inspired lantern.

## Sunday 18 November, Saturdays 8 December & 5 January Family film screening of 'Frozen Sing-Along'

Newstead Gallery  
Sunday 2-3.40pm, Saturdays 11am-12.40pm.  
Free, but booking essential through [www.experiencechester.co.uk](http://www.experiencechester.co.uk).  
Come and join Elsa, Olaf, Anna, Sven and more of your favourite characters for a Christmas sing-along.

*Brought to you by CH1 ChesterBID*



# Family Events

Grosvenor Museum, Chester

**Sunday 25 November, Saturdays 15 & 29 December**

## Family film screening of 'Elf'

Lecture Theatre

Sunday 2-3.40pm, Saturdays 11am-12.40pm. Free, but booking essential through [www.experiencechester.co.uk](http://www.experiencechester.co.uk).

The sweet and funny story of Buddy, a human who grows up amongst Santa's elves, and his trip to New York to look for his father. Buddy finds his father, and the two of them slowly get to know each other, with increasingly chaotic results!

*Brought to you by CH1 ChesterBID*



**Saturday 1 December – Sunday 6 January**

## Twelfth Night Riddle Trail



Twelfth Night – traditionally the last day of Yuletide – was once a time of fun and feasting. Come and follow our museum trail, inspired by traditional Twelfth Night riddles, caricatures and parlour games. Pick up a copy from reception.

## Saturdays 1 & 8 December Christmas Card Making

Newstead Gallery

2-4pm drop-in. Free, suggested donation £1.50.

Start your Christmas preparations early and make a Christmas card in the gallery using our craft materials.



## Sunday 2 & Saturday 22 December, Wednesday 2 January Family film screening of 'Polar Express'

Lecture Theatre

Sunday 2-3.40pm, other days 11am-12.40pm. Free, but booking essential through [www.experiencechester.co.uk](http://www.experiencechester.co.uk).

A boy who doesn't think that Santa Claus exists takes an extraordinary train ride to the North Pole on Christmas Eve.

*Brought to you by CH1 ChesterBID*



## Thursdays 6 & 13 December Winter Watch Parade

Starts from Forum Shopping Centre

7pm. Free.

This spectacular event is based on Chester's 15th-century tradition of 'Setting the Watch', when the city leaders handed over the keys of Chester to the City Watch – the early police force – after processing around the city to ensure it was secure. The Winter Watch Parade combines colourful costumes and a collection of characters to provide a popular festive event. Celebrate Christmas with the Lord of Misrule, devils and dragons, dancing and sword fights, and a spectacular-fire breathing finale.





# Adult Events

Grosvenor Museum, Chester

## Every day of the year

### Guided Walking Tours of Chester with the Guild of Chester Tour Guides

Meet at the Visitor Information Centre, Town Hall Square  
10.30am-12noon. £8, £7 concessions, tickets from guide.  
[www.chestertours.org.uk](http://www.chestertours.org.uk).

Your guide will lead you on a captivating journey through 2,000 years of history, taking in all the main sites along the way, including the Rows, Walls, River and the exterior of the Cathedral. Discover the rich heritage of this much loved city, beginning in Roman times, through the vibrant period of medieval expansion, the desperation of the Civil War, Georgian elegance and Victorian revival, right up to the present day.

### Wednesday 19 September Michael Sandle: Exhibition Tour

Meet in Exhibition Gallery One, then Exhibition Gallery Two & Art Gallery  
2-3pm, drop-in.  
Free, suggested donation £3.

Professor Michael Sandle RA, who studied at Chester School of Art, is widely recognised as one of the finest sculptors in the world and is also a brilliant draughtsman and printmaker. Appropriately for the year in which we commemorate the centenary of the end of the Great War, his powerful work explores the themes of violence, war, death and memorialisation. Join Peter Boughton, the museum's Keeper of Art, to explore the extraordinary work of this great artist.

## Wednesday 3 October

### The Art of War: The Many Faces of Global Conflict

#### Lecture Theatre

1.30-3pm. £3, pay at the door.  
After the Great War (not, as it turned out, the War to end all Wars) artists became regular fixtures in the proliferating violence which led to the Second World War and beyond, right down to the present day. This lecture by Adrian Summer looks at the broadest range of artists recording conflict throughout history, in photography as well as traditional painting and sculpture, treading a line which seeks to avoid the worst of the horror while still telling the truth of the stories.



## Wednesday 17 October

### Romans and Reducing Recidivism: Can Archaeology Change Lives?

#### Lecture Theatre

1-2pm. £3, pay at the door.  
Dr Caroline Pudney explores how archaeology can be socially beneficial. She will show how prison-based outreach projects can offer an innovative trajectory for public archaeology, and specifically the rehabilitation of offenders. Through successful partnerships between heritage and other specialists, and as part of wider programmes of support and intervention, she will demonstrate the potential for future, 'translational' public archaeology.  
*A University of Chester event*

### Thursday 18, Friday 19 & Saturday 20 October Henry V

#### Chester Cathedral

7.30-9.30pm. £20-£35, book via the Cathedral Welcome Desk,  
01244 500959 or  
[www.chestercathedral.com/events](http://www.chestercathedral.com/events).

Marking the centenary of the First World War Armistice, award-winning theatre company Antic Disposition present their critically acclaimed adaptation of *Henry V*. Moving effortlessly between 1415 and 1915, the production combines William Shakespeare's epic history play with original songs inspired by the poetry of A.E. Housman, in a powerful tribute to the young soldiers caught up in conflicts five centuries apart.

# Adult Events

Grosvenor Museum, Chester

## Wednesday 24 October Change in a Historic Landscape: The Lost Buildings of Port Sunlight

Lecture Theatre

1-2pm. £3, pay at the door.



Founded in the 19th century by William Hesketh Lever to house 'Sunlight Soap' factory workers, Port Sunlight is a thriving tourist destination containing 900 listed buildings. The village's identity focuses on its supposedly unchanging nature, despite considerable development throughout its relatively short history. Dr Rebecca Andrew's talk concentrates on demolished, replaced or re-purposed 'lost' buildings over the past 125 years. Challenging common representations of Port Sunlight, it questions the significance for tourists and residents alike.

*A University of Chester event*

## Wednesday 24 October Spooky Chester

Meet at Chester Town Hall

5-6.30pm. £4, pay the guide at the event. Booking essential at The History Hub @ The Grosvenor Museum or call 01244 972088.

Join local guide John Whittingham on this eerie evening walk to seek out the ghosts and ghouls which apparently abound in our haunted city. Taking in Abbey Square, the Walls and the Eastgate Clock, then down to the Amphitheatre, the ruins at St John's Church and the Groves, before finishing the tour in Bridge Street – get ready to be scared!



## Thursday 25 October Ghost Stories for Older Folk

Tea Room

3-4pm.

Free, suggested donation £1.50. Refreshments available to buy.

Join our costumed storyteller for a rendition of Oscar Wilde's classic short story *The Canterville Ghost*. This event is aimed at older people, those living with dementia, their families and carers.

**Tuesday 30 October, Monday 19  
November, Monday 14 January,  
Friday 15 February**

## Tombs and Memorials in Chester Cathedral

Meet at Chester Cathedral  
admissions desk in the Undercroft

11am-12noon. £5, pay on the door  
or in advance on 01244 500959.



Join Nick Fry, the cathedral's Bedesman, for a look at some of the memorials and those commemorated in Chester Cathedral, ranging from tobacconists, aristocrats and candle merchants to the armed services and everything in between. The memorials have many different stories to tell; some are heart-breaking while others are more light-hearted, but all tell us something of their times.



# Adult Events

Grosvenor Museum, Chester

## Wednesday 31 October America at a Turning Point: Trump, the Mid-Term Elections and the Future of the Presidency

### Lecture Theatre

1-2pm. £3, pay at the door.

In November, Donald Trump will face a major test in the mid-term elections. With one-third of Senate and all House seats up for grabs, this is seen by many as a turning-point for the United States and a referendum on its future direction. Dr Donna Jackson will discuss the importance of these elections and the potential consequences for a deeply divided nation and a hugely controversial president.

*A University of Chester event*

## Wednesday 31 October Cheshire Witch Trials

### Lecture Theatre

6-8pm. Free event with refreshments, suggested donation £3. Suitable for ages 12+.

Inspired by records held at Cheshire Archives, and a recent visit to *The Crucible* at Storyhouse, the Grosvenor Museum's Youth Panel have created their own Cheshire Witch Trial performance pieces. Join us for an evening of entertaining 16th and 17th-century intrigue, a time when it seemed the whole country had gone on a witch hunt. You never know, even you may be accused!



## Thursday 8 November Tour of Overleigh's Victorian Cemetery

Meet at cemetery gates, Overleigh Road

11am-12.30pm

£8, £7 concession, pay the guide on the day.



Join a member of the Guild of Chester Tour Guides for a walk around Overleigh Cemetery. Opened in 1850, this is an early example of the park-like burial grounds favoured by the Victorians. We shall be looking at the cemetery's great variety of Victorian monuments and discovering some of the fascinating stories of the people they commemorate.

## Saturday 10 November A Concert of Remembrance

### Chester Cathedral

7.30-9.30pm. £12.50-£20, book via the Cathedral Welcome Desk, 01244 500959 or [www.chestercathedral.com/events](http://www.chestercathedral.com/events).

To commemorate the centenary of the end of the First World War, the Choir of Chester Cathedral (director Philip Rushforth) is joined by the world-famous Orchestra of St John's, Smith Square (conductor John Lubbock), in a performance of the eternally popular Requiem by Gabriel Fauré. Other music will include popular works by Brahms, Stanford and Parry, accompanied by readings of poetry and letters from the front line.



## Wednesday 14 November Dead Funny

### Lecture Theatre

7.30-9pm. £10, with a free drink: tickets from [www.ticketsource.co.uk/](http://www.ticketsource.co.uk/) westcheshiremuseums.

Join us for something a little bit different! Comedians from up and down the country will become professors and comment on some of the exhibits in the current exhibition *Dead Normal*, filling you in on what they actually are. The catch? They have never seen any of the slides before and will be making up on the spot. It's *Time Team* meets *Who's Line is it Anyway* and promises to be a hilarious night.

# Adult Events

Grosvenor Museum, Chester

**Thursday 15 November**

## **Sacrifice, Sorrow and Salvation: The Grosvenor Family, Eaton Hall and the Great War**

**Lecture Theatre**

7.30-9pm. Grosvenor Museum Society members free, non-members £5.

Louise Benson, Archivist for the Eaton Estate, relates the story of the Grosvenor family during the Great War. It is often said that the conflict left no family untouched, and that is true of the Grosvenors: for them too this was a time of loss, grief, and experiences that would change the family forever.

However, there was salvation: Eaton Hall, like many country houses, became a hospital for wounded soldiers – a place of refuge in dark times.

*A Grosvenor Museum Society event*

**Saturday 17 November**

## **Explore your Archive: What a Liberty!**

Cheshire Record Office,  
Duke Street, Chester  
10.30am-3.30pm.

Free, no booking required.

Tales from the manor court rolls – from the struggle for control between church and city to bad language and betting in Boughton! Meet the archivists to accompany you on a journey back in time with the help of Chester's medieval documents.



**Thursday 22 November**

## **Funeral Fashions in Britain 1894-1998**

**Lecture Theatre**

7-8pm. Free, suggested donation £3.

The Newman Brothers factory in Birmingham made the finest quality coffin furniture for just over 100 years, before its closure and subsequent rescue as the Coffin Works museum. The history of the company parallels the many changes in funerary practice which took place during the 19th and 20th centuries. This talk will chart the rise and fall of Newman Brothers, as well as wider trends in funerals, cemeteries and mourning, to reveal the social history behind the transformation of death from the 'Victorian Celebration' to contemporary practice.



**Saturday 24 November**

## **The Britishness of British Art: A Study Day with Adrian Sumner**

**Lecture Theatre**

10am-3.30pm. £17, includes lunch, tea & coffee. To book call 10606 782516 or email [adriansu3913842@aol.com](mailto:adriansu3913842@aol.com).

Explore the astonishing breadth and depth of British art from the Neolithic to the world of tomorrow with this day of magnificently-illustrated lectures. Of course we look at popular favourites such as Hogarth and Stubbs, Constable and Turner, Burne-Jones and Hockney, but we will take time to seek out such lost and hidden treasures as the work of John Duncan, William Orpen, Nicholas Hilliard, Maria Cosway, Eleanor Fortescue-Brickdale, Gwen John, and many more – a revelation of sorts.



# Adult Events

Grosvenor Museum, Chester

**Thursday 29 November**

## The Medieval Cemeteries of Poulton

Lecture Theatre

7.30-8.30pm.

Free, suggested donation £3.



Excavations at Poulton, a multi-period archaeological site just outside Chester, have uncovered evidence of human population spanning thousands of years from the Iron Age through to the modern period. One of the most significant areas is a large cemetery surrounding a medieval chapel. This talk by Kevin Cootes, Poulton Project Archaeologist, examines this fascinating site and explores the most recent archaeological discoveries.

**Tuesday 4 December**

## The Archaeology of the Walking Dead

Lecture Theatre

7.30-8.30pm.

Free, suggested donation £3.

Join Professor Howard Williams from the University of Chester as he explores the results and implications of an archaeological study of the zombie apocalypse.

**Wednesday 12 December**

## The Roman Way of Death

Lecture Theatre

7.30-8.30pm. Free, suggested donation £3.

Nearly 2000 years ago, Chester was a busy military fortress with a flourishing civilian settlement attached. Its inhabitants largely followed Roman traditions when burying and commemorating their dead. This talk will explore Deva's fascinating Roman cemeteries and take a closer look at local burial practices.



**Monday 17 – Wednesday 19 December**

## TAG Deva: The 40th Theoretical Archaeology Group Conference

University of Chester, Parkgate Rd

For details please contact

tagdeva@chester.ac.uk.



The 40th TAG Conference will take place in the historic city of Chester. In the Roman period this legionary fortress was known as Deva, home of the Legio XX Valeria Victrix. TAG Deva presents a range of theoretical topics, ideas and debates across the breadth and diversity of current archaeological theory. It also encapsulates the distinctive prehistory and history of Chester and its region, with sessions on subjects relating to frontiers and mobilities in terms of time and space, land and sea, in the context of Chester as an historic border city between England and Wales.



# Adult Events

Grosvenor Museum, Chester

**Tuesday 22 January**

## The Victorian Way of Death

Lecture Theatre

2.30-4pm. Grosvenor Museum  
Society members free, non-members £5.

From horse-drawn hearses to jet jewellery, the Victorians lavished much more money on their funerals than on their weddings. Find out why as Dr Amanda Draper lifts the veil on cryptic customs shrouding a Victorian Death.

*A Grosvenor Museum Society event*



**Wednesday 23 January**

## Voices from the Holocaust

Lecture Theatre

7.30-8.30pm. Free, suggested donation £3.

A moving opportunity to see and discuss original correspondence written by prisoners while they were living and, often, dying in Second World War Nazi concentration camps including Auschwitz, Dachau and Theresienstadt. Presented by Anthony Annakin-Smith, local author and historian. The material allows us to enter briefly the real lives of victims and to hear their emotions and experiences. Moving, enlightening and powerful.

**Wednesday 30 January**

## To Kill a King: The Regicide of Charles I

Lecture Theatre

7.30-8.30pm.

£5: tickets from [www.ticketsource.co.uk/westcheshiremuseums](http://www.ticketsource.co.uk/westcheshiremuseums).

At 2pm, on Tuesday 30 January 1649, King Charles I stepped onto a wooden scaffold outside Whitehall's Banqueting House, knelt down in front of an audience of thousands and was publicly beheaded as a traitor. From imprisonment and trial to execution and legacy, historian Rebecca Rideal unravels one of the most important events in British history – the regicide of Charles I.



## Corporate Partnerships at the Grosvenor Museum

We are delighted to welcome the following as the Grosvenor Museum's founder Corporate Partners:

**Gold Partner**



**Silver Partner**



**Bronze Partner**



As a Corporate Partner you and your business can show a real passion for social responsibility and enjoy a wide range of special benefits including brand exposure to over 80,000 visitors every year and more online.

**Membership benefits include:**

- Free use of the iconic Victorian lecture theatre for meetings and corporate entertainment
- VIP invitations to private events and exhibition openings
- Sponsor an item on public display
- Enjoy exclusive gallery tours and access behind the scenes at the museum

These are just some of the benefits available to Bronze, Silver and Gold Partners. To receive a Corporate Partnership Scheme information pack and to discuss sponsorship opportunities for your business, please contact Richard Hall on 01244 972094 or [richard.hall2@cheshirewestandchester.gov.uk](mailto:richard.hall2@cheshirewestandchester.gov.uk).

# Chester History & Heritage

The History Hub @ The Grosvenor Museum, 27 Grosvenor Street, Chester, CH1 2DD

Chester History & Heritage has a new home at The History Hub @ The Grosvenor Museum, together with our books, maps and photographic collections, and our popular family history research service. Our wonderful Facebook and website pages are followed by well over 4,000 history lovers, and you can explore our online imagebank which boasts over 21,000 unique historic images of Chester. We look forward to seeing you all in our new home!

Monday – Friday & first Saturday in each month 10.30am-5pm.  
Closed 23-30 December & 1 January.

Telephone 01244 972197

Email: [CHH@cheshirewestandchester.gov.uk](mailto:CHH@cheshirewestandchester.gov.uk)

Find us on Facebook: Chester History and Heritage Centre

Follow us on Twitter @cwacmuseums

Website: [www.westcheshiremuseums.co.uk](http://www.westcheshiremuseums.co.uk)



# Weaver Hall Museum & Workhouse

162 London Road, Northwich, CW9 8AB

Weaver Hall Museum & Workhouse is full of displays and tales of the history and industry of West Cheshire. The stories are told through films, reconstructions, models and vivid displays of intriguing artefacts, which relate to local industry, market towns, transport, archaeology, and the building's history as the Northwich Union Workhouse. An exhibition in the former workhouse schoolroom explores life for the paupers. Around the rest of the museum you can find out about workhouse food, discover some of the people who lived here, and visit the recreated Master's sitting room.



## Admission

Adult £3.50, concession £2.50, child £1.80, family (2+2) £8, pre-booked groups £2.50 per person. Season tickets: adult £6, concession £5, 2 senior citizens & up to 3 children £15, 2 adults & up to 3 children £18. Free to view temporary exhibitions (suggested donation £3) and to visit the coffee shop and gift shop.

Tuesday – Friday, school holiday Mondays & Bank Holiday Mondays 10am-5pm, Saturday & Sunday 2-5pm. Closed 24-28 December & 1 January.

## Support us

The Friends of Weaver Hall offer vital support for the museum. Friends enjoy a full and varied programme of events including evening talks and film nights. See [www.fowhm.org.uk](http://www.fowhm.org.uk).

## Volunteers

Please see all West Cheshire Museums volunteering roles on the website [www.westcheshiremuseums.co.uk](http://www.westcheshiremuseums.co.uk)

## Disabled access

Wheelchair access is available throughout the museum.



Telephone **01606 271640**

Find us on Facebook: **Weaver Hall Museum and Lion Salt Works**

Follow us on Twitter **@cwacmuseums**

Website: [www.westcheshiremuseums.co.uk](http://www.westcheshiremuseums.co.uk)





## Northwich in Stitch



## Wartime Industry and Working Women in Cheshire, 1914-1950



**11 December – 20 January**

## Young Artists in Tuscany

**26 January – 10 March**

## LGBT History Month



**LGBT 2019**  
Lesbian Gay Bisexual Trans History Month

# Family & Adult Events

Weaver Hall Museum & Workhouse, Northwich

## Family Events

Children's activities are aimed at 4 to 12 years unless otherwise stated. Children must be accompanied by an adult. Please contact 01606 271640 for group bookings

**Monday 29 October**

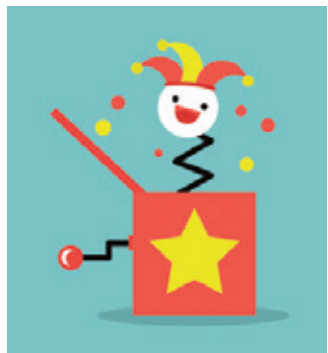
### Spooky Noon: Day of the Dead

3-5pm, drop-in. £1.80 per child.  
Join us for an afternoon of spooky stories and crafts inspired by the Mexican holiday the Day of the Dead.



**Wednesday 31 October &  
Thursday 1 November**  
**Spooky Boxes**

10am-4pm, drop-in. £1.80 per child.  
Come along and create a jack-in-the-box with a spooky twist!



## Adult Events

**Wednesday 26 September**

### Tea and Talk: Who Stayed at Tatton Park?

3-4pm. £1.50, complimentary tea & coffee from 2.30pm.



Join Corey Estensen for an examination of the visitors' book from 1884-1909, when guests to the mansion left behind their signatures, sketches and ephemera. Gain a fascinating insight into a world far removed from modern life; a rarefied world of rank, formality, privilege, but also of artistry, eccentricity and scandal!

**Fridays 28 September, 26 October,  
30 November, 25 January**

### Craft and Chat

10.30am-12.30pm. £3, including tea or coffee.  
Meet like-minded crafters, learn a new skill, and enjoy a cup of tea in the relaxed setting of Weaver Hall Museum's café. There will be demonstrations and projects to work on. Suitable for all levels of experience.



**Thursday 18 October**

### Northwich Shipyards

7 for 7.30-8.30pm.  
£3.50 (Friends of Weaver Hall free).  
Join Tony Barratt to explore nearly 250 years of shipbuilding in the town, some of the vessels which were built here, and where they ended up across the world.  
*A Friends of Weaver Hall event*



**Thursday 25 October**

### Friends Film Night 'The Mercy'

7 for 7.30-9.30pm.  
£5 (Friends of Weaver Hall £4).  
The incredible true story of sailor Donald Crowhurst and his solo attempt to circumnavigate the globe. Our films are shown in the museum's Regalette Cinema with original 1950s seating.  
*A Friends of Weaver Hall event*



# Adult Events

Weaver Hall Museum & Workhouse, Northwich

## Wednesday 31 October Tea and Talk: The Anderton Boat Lift

3-4pm. £1.50, complimentary tea & coffee from 2.30pm.

Built in 1875 to provide a vertical link between the River Weaver and the Trent & Mersey Canal, the boat lift was in use for over a century until it was closed due to corrosion in 1983. Restoration started in 2001 and the boat lift was re-opened in 2002. Join us to discover the history behind one of Northwich's most famous landmarks.



## Thursday 8 November History of the Chemical Industry in Runcorn, Widnes and Northwich

7 for 7.30-8.30pm.

£3.50 (Friends of Weaver Hall free), call 01606 271640 to book.

Join Dr Diana Leitch, a Trustee of the Catalyst Discovery Centre in Widnes, to find out about the two centuries of the chemical industry's development and the key role that the local area has played.

*A Friends of Weaver Hall event*



## Wednesday 28 November Tea and Talk: The History of the Working Class Movement Library



3-4pm. £1.50, complimentary tea & coffee from 2.30pm.

The Working Class Movement Library in Salford is recognised internationally as one of Britain's most important collections of working class history. Find out more about its history and collections with Royston Futter, a Trustee of the Library.

## Thursday 29 November Friends Film Night 'The Post'

7 for 7.30-9.30pm.

£5 (Friends of Weaver Hall £4).



Katherine Graham is the first female publisher of a major American newspaper. Along with editor Ben Bradlee, Graham races to expose a massive government cover-up and risks career and life to do so. Based on a true story.

## Thursday 29 November From Judy to Bette: The Stars of Old Hollywood

7 for 7.30-9.30pm. £10, book at [www.ticketsource.co.uk/cheshire-ruraltouringarts](http://www.ticketsource.co.uk/cheshire-ruraltouringarts).

Join Rebecca Perry for a power-punch of cabaret style entertainment that chronicles the life and times of Bette Davis, Judy Garland, Betty Hutton and Lucille Ball. These four trailblazing stars from the Golden Age of cinema saw their own value before anyone else did and fought for the roles that made them famous... and infamous. It's an evening of marvellous melodies and scandalous headlines.



## Wednesday 30 January Tea and Talk: Liquid Pleasures

3-4pm. £1.50, complimentary tea & coffee from 2.30pm.

Coffee, chocolate and tea were introduced to Britain in the 17th century. This talk looks at the social history of these new drinks and the effects they've had then and since.





# Lion Salt Works, Northwich

Ollershaw Lane, Marston, Northwich, Cheshire, CW9 6ES

The Lion Salt Works is a restored historic open-pan salt making site in the village of Marston, beside the Trent and Mersey Canal and close to the remarkable Anderton Boat Lift. This £10 million project opened in 2015 and was voted the UK's Best Heritage project in the 2016 National Lottery Awards. It offers a fascinating journey through the life of the country's last open-pan salt works. When exploring the site and its restored buildings, you will discover how the Salt Works operated and the impact of salt on mid-Cheshire's people, economy and landscape. Your visit will also set the scene for a wider exploration of the footpaths, waterways and attractions of the adjacent Northwich Woodlands and the Weaver Valley.

## Admission

Adult £6.25, concession £5.50, child £4, family (2+2) £15.20, concession family (1+3) £14, adult annual pass £18, family annual pass (2+2 or 1+3) £50. Free access to café, gift shop, butterfly garden, play area, canal towpath and car park.

Museum open Tuesday – Sunday & Bank Holiday Mondays  
10.30am-5pm. Play area and butterfly garden open daily  
9am-5.20pm. Closed 24-26 December & 1 January.



General Enquiries **01606 275066**  
Room Hire and Group Bookings **01606 275040**  
Find us on Facebook: **Weaver Hall Museum and Lion Salt Works**  
Follow us on Twitter **@cwacmuseums**  
Website: **[www.westcheshiremuseums.co.uk](http://www.westcheshiremuseums.co.uk)**



## Support us

The Lion Salt Works Trust offers vital support including technical and historical advice, project and grounds development, visitor tours and a regular publication. To become a Saltie contact **[ngkhunt21@gmail.com](mailto:ngkhunt21@gmail.com)**.

## Volunteers

Please see all West Cheshire Museums volunteering roles on the website **[www.westcheshiremuseums.co.uk](http://www.westcheshiremuseums.co.uk)**.

## Disabled access

Wheelchair access is available across the whole site.

# Exhibitions & Family Events

Lion Salt Works, Northwich

## Exhibitions

### Until 16 November Letters Home: Communications on the Front

This poignant exhibition displays the collections gathered during the last four years during the Cheshire Great War Roadshows and reveals communications with the Front. Post cards, personal items and letters talk of love and loss, creativity and resilience in the face of great hardship. The exhibition has been curated by award-winning research volunteer, Nigel Meyrick.



### 27 November – 17 February Visual Arts Cheshire presents Twelve Images of Northwich



Lion Salt Works is proud to be showcasing the twelve artworks that will feature in Visual Arts Cheshire's 2019 Northwich calendar. Produced by local artists, these captivating images offer viewers twelve scenes of Northwich and surrounds, presenting the region's beautiful landscapes and incredible industrial heritage.

## Family Events

Children's activities are aimed at 4 to 12 years unless otherwise stated. Children must be accompanied by an adult. Please contact **01606 271640** for group bookings.

There is a suggested donation or charge for most events and activities. If you would also like to go round the Lion Salt Works museum and historic core, usual admission charges apply.

### Saturday 27 October Museums at Night: Trick or Treat Experience

Ghostly tours 4.30, 5.30 & 6.30pm. Normal admission charges apply. Aimed at children aged 4-9. Join us for a night of frights at the museum as we lock the doors and meet the ghostly characters who come out to play at night. Put on your scariest costume and join our ghostly tours around the site, go trick or treating in a safe environment, and listen to spooky stories about the mysterious happenings at the salt works.



# Family & Adult Events

Lion Salt Works, Northwich

## Tuesday 30 October Semaphore Flags

10.30am-1pm & 2-4pm, drop-in.  
Suggested donation £1.50.

This special event marks the centenary of the end of the Great War and Lion Salt Works' exhibition *Letters Home: Communications on the Front*. Try your hand at making and communicating with semaphore flags, a method of communication used during the Great War of 1914-1918.



## Wednesday 31 October Halloween Hysteria

10.30am-1pm & 2-4.30pm, drop-in.  
Suggested donation £1.50.

It's that time of year when things so bump in the night! Get into the Halloween spirit by making some ghostly and downright scary decorations to frighten away any trick or treaters!



## Tuesday 4 – Sunday 9 December A Victorian Christmas at the Works

Activities daily 10.30am-5pm.

Christmas Market open Tuesday – Saturday 10.30am-8pm

Come along to the Lion Salt Works and celebrate the start of the Christmas season with us. Festive fun for all the family, including music and traditional crafts, plus the community Christmas Market in the grounds of the Lion Salt Works. Santa has sent a message that he will be here too!

## Adult Events

### Saturday 22 September Beyond Automatic Photography Workshop: Taking Creative Control of Your Photos

10am-4pm. £20, book at  
[www.derekrandallphotography.com/workshops](http://www.derekrandallphotography.com/workshops).



This beginners' workshop will teach you how to move beyond the auto mode on your camera and learn how you can use three simple tools to take your photography from snapshots to great shots! You will master the mystery of Aperture, Shutter Speed, and ISO. Experience the creative freedom that comes from taking control of your camera.

## Saturday 29 September The Salt Works Sessions: Kathryn Roberts & Sean Lakeman



7-11pm. £12.50, book at  
[lswsessions@gmail.com](mailto:lswsessions@gmail.com).

The first in a series of folk evenings to be held over the coming year. Session 1 features Kathryn Roberts and Sean Lakeman, well known in the UK for drawing upon folk tradition's natural backdrops whilst weaving in their own distinctive and eclectic flavours. Twice winners of the BBC Radio 2 Folk Award for 'Best Duo', an evening in the company of this highly respected and much loved couple is intimate, inclusive, warm and inspiring.





# Adult Events

Lion Salt Works, Northwich

**Friday 12 October**

## Common Lore

7.30-8.30pm. Adult £9, under-17 £6.50, family tickets available: book at Lion Salt Works 01606 275066 or visit [www.ticketsource.co.uk/cheshireruraltouringarts](http://www.ticketsource.co.uk/cheshireruraltouringarts).



Stute Theatre brings us *Common Lore*, an exciting fusion of rap, spoken word, projections and live electronic music. A modern take on traditional stories, this unique and relevant show sees fairy tales and modern life collide. Meet Scarlet, as she reinvents the childhood stories told to her by her Nan in her own unique way.

An inventive, fast-paced reinvention of traditional theatre, technology and spoken word – all performed by one young woman (and her mobile phone). Suitable for ages 11+.

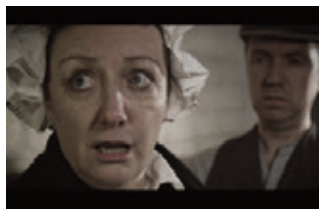
*Supported by Cheshire Rural Touring Arts*



**Wednesday 31 October**

## The Haunted Man: A Dickens Winter Ghost Story

7.30-9.45pm. Adult £9, under-17 £6.50, family tickets available: book at Lion Salt Works 01606 275066 or visit [www.ticketsource.co.uk/cheshireruraltouringarts](http://www.ticketsource.co.uk/cheshireruraltouringarts).



Based on the classic Victorian story by Charles Dickens, Kindred Theatre's atmospheric new production of love and loss, frighteners and friendship is a blend of candlelight, shadows, music and theatrical storytelling, perfect for a spooky evening. Suitable for ages 11+.

*Supported by Cheshire Rural Touring Arts*

**Saturday 3 November**

## Letters Home: Talk and Gallery Tour

2-3.30pm. Free. Award-winning Great War researcher Nigel Meyrick has curated the *Letters Home* exhibition, drawing together items gathered from local people during the Cheshire Great War Roadshows. Nigel shares his detailed knowledge of the items in the exhibition, offering insight and reflection into the authors and recipients of the letters and postcards.

**Thursday 6 December**

## The Salt Works Sessions: Gilmore & Roberts

8-11.30pm. £12, book at [lswsessions@gmail.com](mailto:lswsessions@gmail.com) or ring 07796-175437.

Contemporary folk/acoustic duo Gilmore & Roberts combine award-winning songwriting with astounding musicianship and their trademark harmonies to create a powerful wall of sound. Nominated three times at the BBC Radio 2 Folk Awards, Katriona Gilmore and Jamie Roberts released their debut album in 2008. Since then, the duo have toured Canada and mainland Europe, played the UK's biggest acoustic festivals, toured with folk rock legends Fairport Convention, and won countless accolades for their genre-spanning work. You can also visit our Christmas Market before the show.



# Diary



## Key

- Grosvenor Museum
- Weaver Hall Museum & Workhouse
- Lion Salt Works

## September

- **Wednesday 19**  
Michael Sandle: Exhibition Tour
- **Saturday 22**  
Beyond Automatic Photography Workshop
- **Wednesday 26**  
Who Stayed at Tatton Park?
- **Friday 28**  
Craft and Chat
- **Saturday 29**  
Kathryn Roberts & Sean Lakeman

## October

- **Wednesday 3**  
The Art of War
- **Friday 5**  
'Quiet' Afternoon
- **Monday 8**  
Museum Explorers
- **Friday 12**  
Common Lore
- **Wednesday 17**  
Romans and Reducing Recidivism
- **Thursday 18**  
Northwich Shipyards

- **Thursday 18**  
Henry V
- **Friday 19**  
Henry V
- **Saturday 20**  
Henry V
- **Wednesday 24**  
The Lost Buildings of Port Sunlight
- **Wednesday 24**  
Spooky Chester
- **Thursday 25**  
Ghost Stories for Older Folk
- **Thursday 25**  
The Mercy
- **Friday 26**  
Craft and Chat
- **Saturday 27**  
Coco
- **Saturday 27**  
Trick or Treat Experience
- **Monday 29**  
Spooky Noon: Day of the Dead
- **Monday 29**  
Coco
- **Monday 29**  
Dancing Skeletons
- **Tuesday 30**  
Semaphore Flags
- **Tuesday 30**  
Tombs and Memorials in Chester Cathedral
- **Wednesday 31**  
Spooky Boxes
- **Wednesday 31**  
Halloween Hysteria

- **Wednesday 31**  
America at a Turning Point
- **Wednesday 31**  
Halloween Crafts
- **Wednesday 31**  
The Auderton Boat Lift
- **Wednesday 31**  
Cheshire Witch Trials
- **Wednesday 31**  
The Haunted Man

## November

- **Thursday 1**  
Spooky Boxes
- **Thursday 1**  
Celtic Lanterns
- **Friday 2**  
Coco
- **Friday 2**  
'Quiet' Afternoon
- **Saturday 3**  
Letters Home: Talk and Gallery Tour
- **Thursday 8**  
Tour of Overleigh's Victorian Cemetery
- **Thursday 8**  
History of the Chemical Industry
- **Saturday 10**  
A Concert of Remembrance
- **Monday 12**  
Museum Explorers
- **Wednesday 14**  
Dead Funny
- **Thursday 15**  
The Grosvenor Family, Eaton Hall and the Great War

# Diary

- **Saturday 17**  
Explore your Archive: What a Liberty!
- **Sunday 18**  
Frozen Sing-Along
- **Monday 19**  
Tombs and Memorials in Chester Cathedral
- **Thursday 22**  
Funeral Fashions in Britain 1894-1998
- **Saturday 24**  
The Britishness of British Art
- **Sunday 25**  
Elf
- **Wednesday 28**  
History of the Working Class Movement Library
- **Thursday 29**  
The Post
- **Thursday 29**  
From Judy to Bette: The Stars of Old Hollywood
- **Thursday 29**  
The Medieval Cemeteries of Poulton
- **Friday 30**  
Craft and Chat

## December

- **Saturday 1**  
Twelfth Night Riddle Trail (until 6 January)
- **Saturday 1**  
Christmas Card Making
- **Sunday 2**  
Polar Express
- **Tuesday 4**  
A Victorian Christmas at the Works

- **Tuesday 4**  
The Archaeology of the Walking Dead
- **Wednesday 5**  
A Victorian Christmas at the Works
- **Thursday 6**  
A Victorian Christmas at the Works
- **Thursday 6**  
Winter Watch Parade
- **Thursday 6**  
Gilmore & Roberts
- **Friday 7**  
A Victorian Christmas at the Works
- **Friday 7**  
'Quiet' Afternoon
- **Saturday 8**  
A Victorian Christmas at the Works
- **Saturday 8**  
Frozen Sing-Along
- **Saturday 8**  
Christmas Card Making
- **Sunday 9**  
A Victorian Christmas at the Works
- **Monday 10**  
Museum Explorers
- **Wednesday 12**  
The Roman Way of Death
- **Thursday 13**  
Winter Watch Parade
- **Saturday 15**  
Elf
- **Monday 17**  
TAG Deva

- **Tuesday 18**  
TAG Deva
- **Wednesday 19**  
TAG Deva
- **Saturday 22**  
Polar Express
- **Saturday 29**  
Elf

## January

- **Wednesday 2**  
Polar Express
- **Friday 4**  
'Quiet' Afternoon
- **Saturday 5**  
Frozen Sing-Along
- **Monday 14**  
Museum Explorers
- **Monday 14**  
Tombs and Memorials in Chester Cathedral
- **Tuesday 22**  
The Victorian Way of Death
- **Wednesday 23**  
Voices from the Holocaust
- **January 25**  
Craft and Chat
- **Wednesday 30**  
Liquid Pleasures
- **Wednesday 30**  
The Regicide of Charles I

## February

- **Friday 1**  
'Quiet' Afternoon
- **Friday 15**  
Tombs and Memorials in Chester Cathedral



## Grosvenor Museum Chester History & Heritage

27 Grosvenor Street, Chester, CH1 2DD



## Stretton Watermill

Mill Lane, Stretton, Nr. Farndon, SY14 7JA



## Weaver Hall Museum and Workhouse

162 London Road, Northwich,  
Cheshire, CW9 8AB



## Lion Salt Works

Ollershaw Lane, Marston,  
Northwich, CW9 6ES



## Accessing Cheshire West and Chester Council information and services

Council information is also available in Audio, Braille and Large Print formats. If you would like a copy in any of these formats or in another language, please email us at [equalities@cheshirewestandchester.gov.uk](mailto:equalities@cheshirewestandchester.gov.uk) We are also able to provide a British Sign Language (BSL) interpreter to support customers with accessing Council services.

Tel: 0300 123 8 123    Textphone: 01606 867 670  
email: [equalities@cheshirewestandchester.gov.uk](mailto:equalities@cheshirewestandchester.gov.uk)  
web: [www.cheshirewestandchester.gov.uk](http://www.cheshirewestandchester.gov.uk)